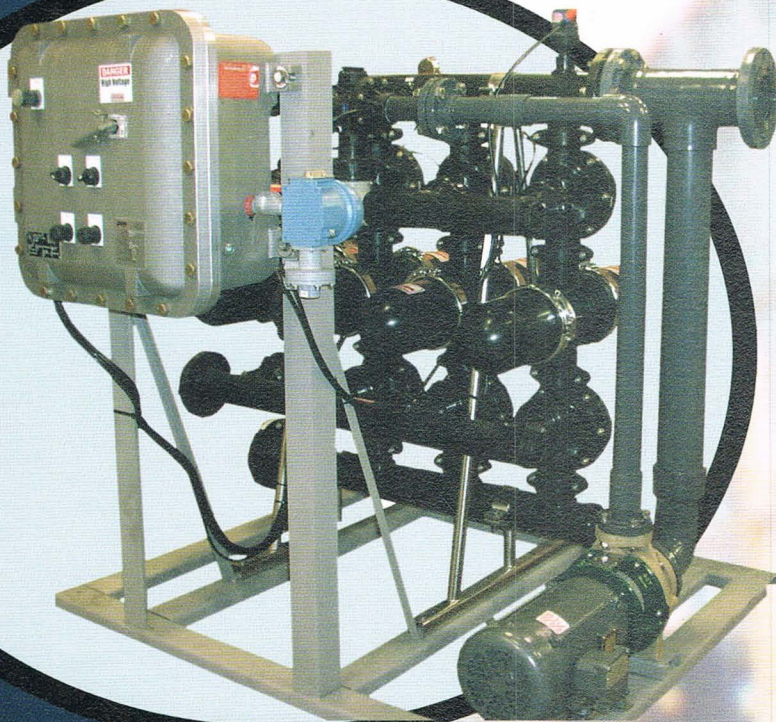
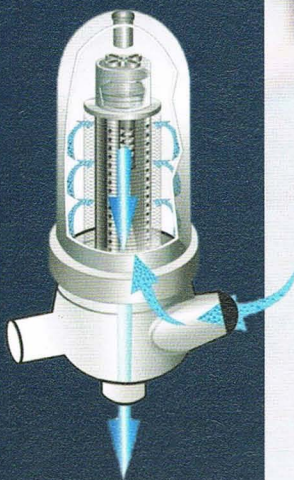


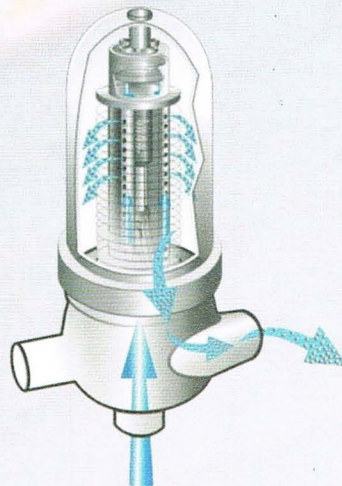
MODULAR FILTER PODS IN HORIZONTAL AND VERTICAL CONFIGURATIONS ACCOMMODATE A BROAD RANGE OF SITE CONDITIONS



Shown with explosion proof controls.



FILTER MODE



BACKWASH MODE

Spin Klin® disc filter technology effectively removes suspended particles from systems, reducing chemical usage and maintaining system efficiency.

- **Water Conservation:** Backwash water consumption is significantly less (up to 75%) as compared to an equivalent sand filter.
- **Permanent Media:** Depth filtration accomplished with polypropylene discs that never need replacement.
- **Compact Design:** Small footprint and light-weight systems reduce installation costs allowing cost effective filtration for larger cooling towers.
- **Lower Maintenance Costs:** Say goodbye to costly time consuming media replacement.

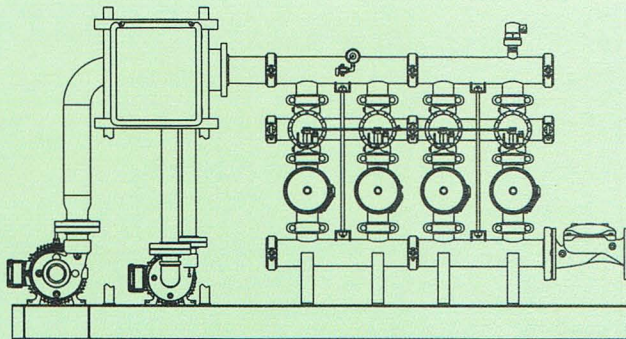
SPIN KLIN® TECHNOLOGY

Filter Mode: Water flows through the discs from outside to inside. The micro-grooves on each side of the discs form a matrix trapping particulate in the intersections.

Backwash Mode: Triggered by differential pressure or time, the individual Spin Klin® pods are backwashed in sequence. Backwash pressure expands the disc column, allowing the discs to "float" while high-pressure jets spray filtered water across the discs. The discs spin freely, and trapped particulate are flushed to the drain.

TOWER CLEAN SIZING CHART

CRYSTAL TOWER CLEAN PACKAGE



ADVANCED FILTRATION CO. OF NJ, INC.

P.O. BOX 324

HOWELL, NJ 07731-0324

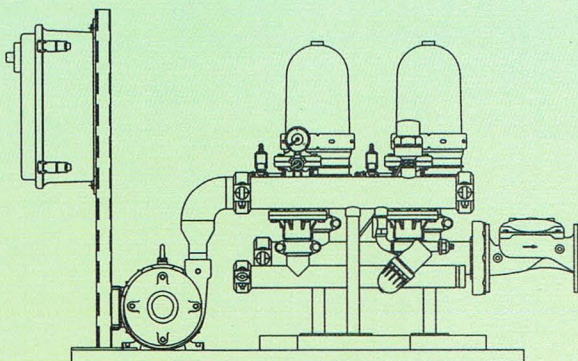
Tel: (732) 901-6676 FAX: (732) 901-6677

E-mail: sales@advancedfiltration.com

				Filter Pump HP	BW Booster Pump HP	Weight (lbs)	Dimensions (Horizontal) H" x W" x L"	Dimensions (Vertical) H" x W" x L"
Flow Rate (GPM)	50-80	Opal	TC-2"x(2)x4"-BP1-GRN	7.5	N/A	376	37 x 26 x 62	48 x 33 x 44
	80-120		TC-2"x(3)x4"-BP1-GRN	7.5	N/A	420	37 x 26 x 73	60 x 33 x 44
	120-160		TC-2"x(4)x4"-BP2-GRN	10	N/A	464	37 x 26 x 86	72 x 33 x 44
	160-200		TC-2"x(5)x4"-BP3-GRN	5	5	508	37 x 26 x 99	84 x 33 x 44
	200-250	Crystal	TC-3"x(3)x6"-BP4-GRN	10	5	931	46 x 42 x 87	65 x 40 x 71
	250-300		TC-3"x(4)x6"-BP4-GRN	10	5	975	46 x 42 x 97	77 x 40 x 71
	300-400		TC-3"x(5)x6"-BP4-GRN	10	5	1,019	46 x 42 x 109	89 x 40 x 71
	400-500		TC-3"x(6)x6"-BP5-GRN	10	5	1,063	46 x 56 x 135	101 x 40 x 71
	500-600		TC-3"x(7)x6"-BP6-GRN	15	5	1,173	46 x 56 x 154	N/A
	600-700		TC-3"x(8)x6"-BP6-GRN	15	5	1,261	46 x 56 x 173	N/A
	700-800	Galaxy	TC-4"x(4)x8"-BP7-GRN	20	15	1,714	61 x 53 x 147	N/A
	800-1000		TC-4"x(5)x8"-BP7-GRN	20	15	2,242	61 x 53 x 125	N/A
	1000-1200		TC-4"x(6)x12"-BP7-GRN	20	15	2,342	61 x 53 x 125	N/A
	1200-1600		TC-4"x(8)x12"-BP8-GRN	30	15	3,006	61 x 60 x 160	N/A

*Polypropylene manifolds standard, other manifold materials and sizes available upon request.

OPAL TOWER CLEAN PACKAGE



GALAXY TOWER CLEAN PACKAGE

